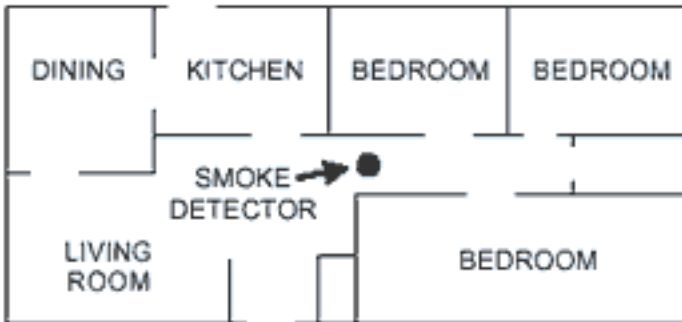


Recommended Locations for Smoke Alarms

Centralized Bedrooms

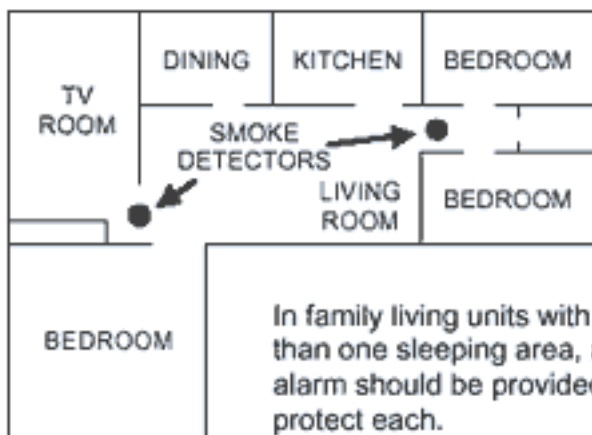
Shall have a minimum of (1) smoke alarm and (1) carbon monoxide alarm within (10) feet of each sleeping area. (Combo units are acceptable)



A smoke alarm should be located between the sleeping area and the rest of the family living unit.

Non-Centralized Bedrooms

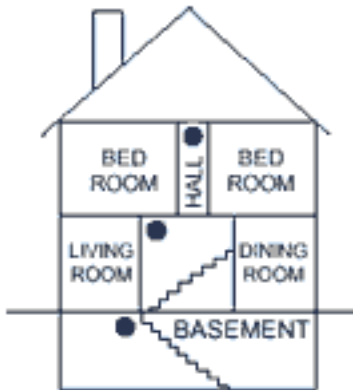
Shall have a minimum of (1) smoke alarm and (1) carbon monoxide alarm within (10) feet of each sleeping area. (Combo units are acceptable)



In family living units with more than one sleeping area, a smoke alarm should be provided to protect each.

Multi-Level Homes

Shall have a minimum of (1) smoke alarm on each level. If there are multi-level bedrooms, (1) carbonmonoxide alarm required within (10) feet of each sleeping area



A smoke detector should be located on each story.

